



**SANTAFLIX: Noelle** - Santa is Christmas to Noelle Kringle and everyone at the North Pole. When her brother reluctantly inherits the hat she's under pressure to make sure he's ready. She does everything in her power to make the hat fit so the perfect gifts can be delivered like they have for 1000s of years. Join Fabric and the Kringles for a fun and wild ride to discover the most important gift to unwrap and share this Christmas.



## WHAT TO EXPECT

### We're glad you're here

Music with Chris Tripolino and the Fabric Band

Welcome

Say Hi and some music

Message -- Melissa Lock

Connecting with and supporting Fabric & more music

Closing Thoughts

## UPCOMING SUNDAYS

SANTAFLIX - 10:30am through 12/10

Kids Christmas Production - 10:30am on 12/17

Christmas Eve - 10:30am (Field) & 9pm (Outside)

Chili Cook-Off - 11:30am on 12/31

**Learn more at FabricMpls.com**

Miss a week or want to hear the message again?

Check our podcast [fabricmpls.podbean.com](http://fabricmpls.podbean.com)



**Kids - What's Happening Today?** Kids are busy rehearsing and preparing for this musical production each Sunday leading up to the presentation on Sunday, December 17. Speaking parts, dancers, sound production and more. Something for everyone! Kids should report to the gym at 10:15am and will meet families back in The Commons at the end of the gathering. First time? Stop by the check-in table to find out how you can participate. More info at [fabricmpls.com/velveteen](http://fabricmpls.com/velveteen).

## COMING UP AND MORE



**Next Sunday - A Boy Called Christmas:** You will enjoy this fun and exciting fairytale story of Nikolas' brave adventure to make sure love, hope, and the spirit of generosity aren't lost. Watch it ahead if you can, and don't worry if you can't. You'll want to afterward for sure! More at [fabricmpls.com/current](http://fabricmpls.com/current).



**Join us for a Christmas Eve gathering...or two!**

**10:30am at Field.** Will you bring cookies to share? Want to help tell the story as a Caroler or help behind the scenes? Write it on your communication card!

**9:00pm Outdoors.** Quiet, simple, candlelit by the creek. More at [fabricmpls.com/christmas2023](http://fabricmpls.com/christmas2023).

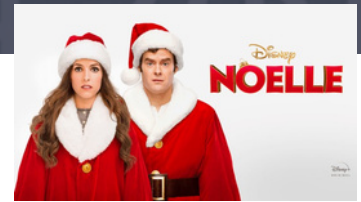


**New Years Eve's Hottest Lunch Plans - Fabric's Chili Cook-Off! Dec 31, 11:30-1:00pm.**

Tell your neighbors and friends to meet you at Field for a NYE lunch date! Delicious chili, spicy competition, and raffle prizes to from local artists and businesses. All proceeds will support the inspiring work of South Minneapolis Nonprofit, Full Cycle!



**Where we are and the story of our land matters.** Most of us live in, and we gather in land that was part of the Dakota people for centuries, but from which they were forcibly and dishonorably removed by the US government. It is an honor and a responsibility for us to live on and care for this land today.



We want to find our fit: our role that matters and matches who we are.

“  
It will fit you when you fit it.  
”

**As you let go of trying to FIT IN, you will start to find your fit.**

But at first it may feel like you don't FIT AT ALL.

**As you find your fit:**

You will take one NEXT RIGHT STEP at a time.

It's not just ABOUT YOU ALONE.

BEING GOOD comes to mean BECOMING YOURSELF.

*...let your light shine before others, so that they may see your good works and give glory to your Father in heaven.*

*- Jesus, Matthew 5.16*

---

**HOMEWORK** - This week, notice you or others trying to fit in. Look for the light trying to shine through. Take the next right step. When you feel worried and unsure, let it be a reminder that you are not the only one shining.

R.O.A.M.

**ROAM (Read, Observe, Apply, Meditate) through these words this week.**  
**Matthew 5.1-16 and Psalm 27**